



GRIPS

Version: 2020.01

What's new?

2019.04 Build 08 – 2020.01 Build 07

Legal notice

Name:	What's new 2019.04 Build 08 - 2020.01 Build 07
Software:	GRIPS
Version:	2020.01
Target audience:	<ul style="list-style-type: none">• GRIPS Technical Writer• GRIPS Translation Manager• GRIPS Publication Manager• GRIPS Information Manager• System Administrator
Language:	English (ENU)
Published version:	20.02.2020 / 09:59:29

STAR AG

Wiesholz 35
8262 Ramsen
Switzerland

© Copyright by **STAR AG** 2020

All parts of this documentation are copyright protected and are for internal use only by our customers. They may not be communicated to third parties.

Any use beyond the boundaries of the copyright is not permitted without written permission from the author. This applies especially to the duplication, publication and translation of this documentation and parts thereof as well as to the storage and editing of the content using electronic data processing systems.

The content of this document was reviewed carefully. STAR AG is not liable for any consequences in connection with the use of this documentation. The brand names mentioned in this document are the property of the trademark holder.

Content

1	Change Descriptions	1
1.1	,GRIPS Editor'	1
1.1.1	Acrolinx™ language check	1
1.1.2	URL of Acrolinx server configurable	2
1.2	,Cockpit'	2
1.2.1	Track status changes in Cockpit dialogs	2
2	Bug fixes and other adjustments	3
2.1	General adjustments	3
2.1.1	Presentation of marked arrows optimized in the 'Status overview - Project: <project name>' dialog	3
2.2	,GRIPS Matrix'	4
2.2.1	Adjustment for creating IU lists of data references	4
2.2.2	Error when calling up the 'Address folder' dialog corrected	4
2.3	,GRIPS Editor'	4
2.3.1	Corrections for S1000D structures	4
2.3.2	Expansion state retained after copying/pasting (Request for Feature)	5
2.4	,GRIPS Viewer'	5
2.4.1	Display of CGM images for Windows scaling	5
2.5	,Cockpit'	5
2.5.1	Improved output of result message during automatic creation of ,Cockpit' publications	5
2.5.2	Automatic creation/updating of Cockpit publications corrected	6
2.5.3	Simplified interfaces when ,Cockpit' languages are not found	7
2.5.4	Call up 'Set status' even in read-only mode	7
2.5.5	Selection in 'Select edited version' dialog expanded	8
	Index	9

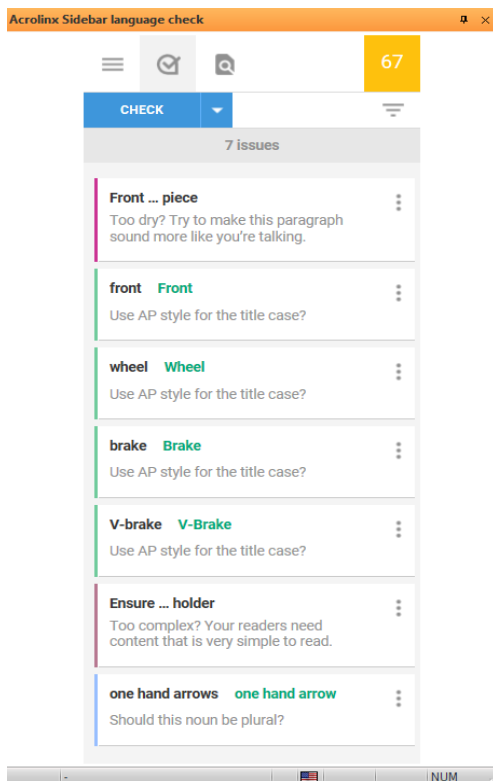


1 Change Descriptions

1.1 ,GRIPS Editor‘

1.1.1 Acrolinx™ language check

Option: Acrolinx connection



Example: Results of the check

Since version 2019.04 Build 09, GRIPS has integrated the **Acrolinx™** Sidebar for author support. Spelling, grammar, punctuation, as well as the style of texts are checked, and their quality is evaluated with a score. After the test, the results are summarized in a **'scorecard'**. In the overview (see image), all the locations are shown where **Acrolinx™** has found a discrepancy with the predefined rules. **Acrolinx™** calls these located instances **,cards'**. They are indicated when selected in the data window.

Sample applications

- You want to incorporate the internal company composition and style rules more rigorously in the text creation process.
- You want to lower the cost of preparing texts and simultaneously increase the quality of your texts.

20.02.2020 / 09:59:29

1.1.2 URL of Acrolinx server configurable

Option: Acrolinx connection

In ,GRIPS' projects for which the **Acrolinx™** check is available, up until now, the internet address (URL) of the **Acrolinx™** server had to be configured by each ,GRIPS' user individually in the ,GRIPS Editor'. As of ,GRIPS' version 2020.01 Build 03, the configuration can also be carried out for the entire project, simplifying the **Acrolinx™** setup.



Note

If you are interested in an appropriate configuration, contact your ,GRIPS' Support.

1.2 ,Cockpit'

1.2.1 Track status changes in Cockpit dialogs

Option: Planning Package

The screenshot displays two overlapping windows from the GRIPS Cockpit. The left window, titled 'Projects & Publications', shows the configuration for a project named 'Stom2011'. It includes fields for Name, Article number, Cost center, Pre-Publication, Time frame, and Entered on/by. The right window, titled 'History - Project: IRIS-Pro-Bike', shows a table of status changes for the project.

Anchor	Lock	Attribute	Status (Publication status)	Date	Changed on
Stom2011			C50:Published	14.10.2019 13:13:49	
Stom2011		Edited		14.10.2019 13:13:33	30.01.2020 11
Stom2011			C50:Published	14.10.2019 13:10:21	
Stom2011			C40:Completed	14.10.2019 13:10:17	
Stom2011			C20:InProgress	14.10.2019 13:10:12	
Stom2011			C10:Defined	14.10.2019 13:10:09	
Stom2011		Edited		14.10.2019 13:09:59	14.10.2019 11

Many ,GRIPS' projects use ,Cockpit', the interface for planning editing, to control automatic processes (or 'workflows') for publication and/or the translation of their content. The processes are controlled through the Cockpit status. In such projects, ,GRIPS' users would like to follow which automations were carried out when, such as when a particular publication is completed in a target system, for example.

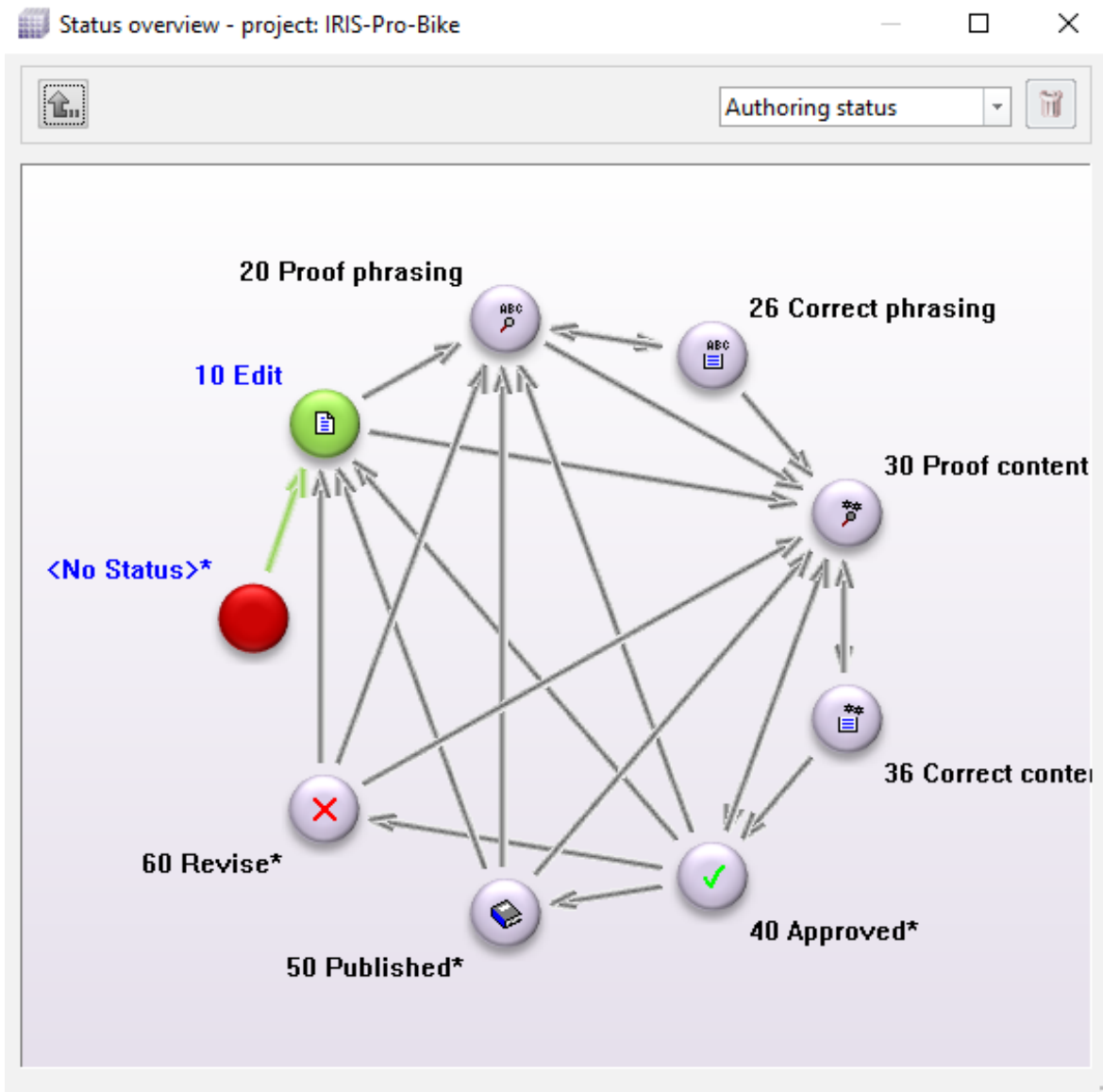
For this purpose, the '**Display history**' button was added in the respective dialog on all Cockpit planning levels (projects, publications, change requests and tasks).

When the button is clicked on, the history of the respective Cockpit IU is called up. Substantive changes to the Cockpit data as well as status changes can be accessed here. This function was integrated into ,GRIPS' as of version 2019.04 Build 10.

2 Bug fixes and other adjustments

2.1 General adjustments

2.1.1 Presentation of marked arrows optimized in the 'Status overview - Project: <project name>' dialog



In the 'Status overview - Project: (project name)' dialog (available in ,GRIPS Matrix' as well as ,GRIPS Manager'), the ,GRIPS' user can get the status model of the ,GRIPS' project at a glance, including which statuses are defined, what the start and publication statuses are, etc. The status sequence is depicted with arrows. The status model can also potentially be directly modified here by drawing new arrows or deleting existing arrows.

The presentation of the arrows has been improved with ,GRIPS' version 2019.04 Build 13, so that an arrow is now automatically brought to the foreground as soon as it is selected. As a result, readability, and therefore the operation of the dialog, is improved overall.

20.02.2020 / 09:59:29

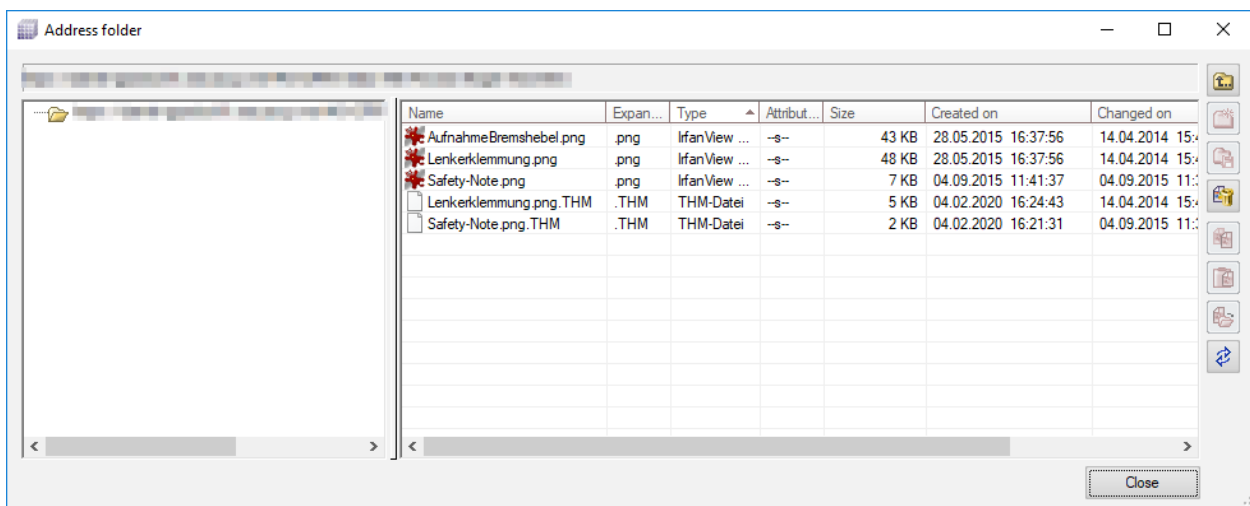
2.2 ,GRIPS Matrix'

2.2.1 Adjustment for creating IU lists of data references

Do you want to quickly and easily create IU lists with the data references of an IU? With the **'Create list of all linked IUs...'** as well as the **'Create list of all referencing IUs...'** functions, this is exactly what you can do. The **'Create list of all linked IUs...'** function collects all data links starting from the selected IU, and creates an IU list from them. Conversely, with the **'Create list of all referencing IUs...'** function, you find all IUs that reference the selected IU. You can call up both functions in the context menu of individual IUs.

Until now, when calling up the **'Create list of all linked IUs...'** function, all GEN information as well as ITDs were also added to the IU list. As of version 2019.04 Build 08 of ,GRIPS', GEN information that is not available and does not have enabled matrix addresses, are no longer part of the IU list. The same applies for ITDs.

2.2.2 Error when calling up the 'Address folder' dialog corrected



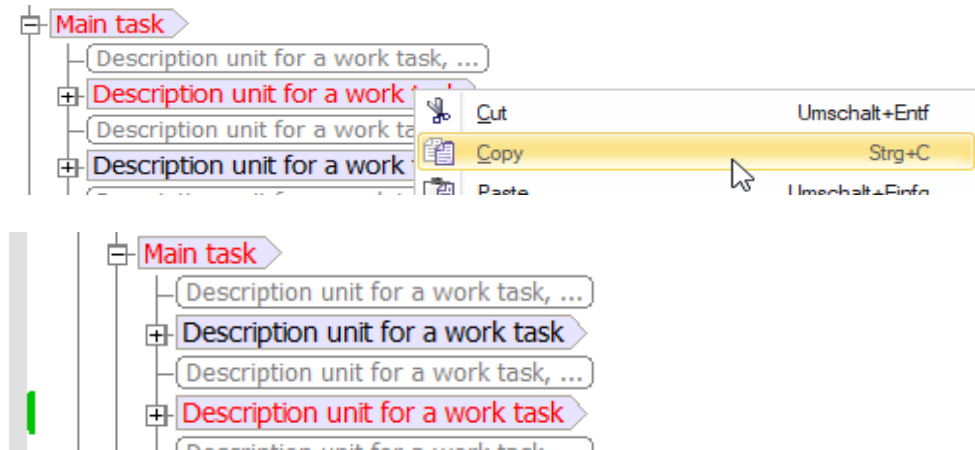
Under certain circumstances, the address folder for ,GRIPS WebMatrix' could not be displayed in the **'Address folder'** dialog. This error has been corrected in version 2019.04 Build 11.

2.3 ,GRIPS Editor'

2.3.1 Corrections for S1000D structures

For certain combinations in S1000D structures, invalid data could potentially be collected by the ,GRIPS Editor'. For these structures, the ,GRIPS Editor' in version 2019.04 Build 11 was optimized so that data collection in S1000D projects was improved.

2.3.2 Expansion state retained after copying/pasting (Request for Feature)



When inserting data from the clipboard into the ,GRIPS Editor' data window, the state of the data elements' expansion was not applied correctly. For example, if a collapsed data element was inserted at a different location, the added content would be opened. This and other related effects were corrected in version 2020.01 Build 03 so that expansion states are now always applied correctly.

2.4 ,GRIPS Viewer'

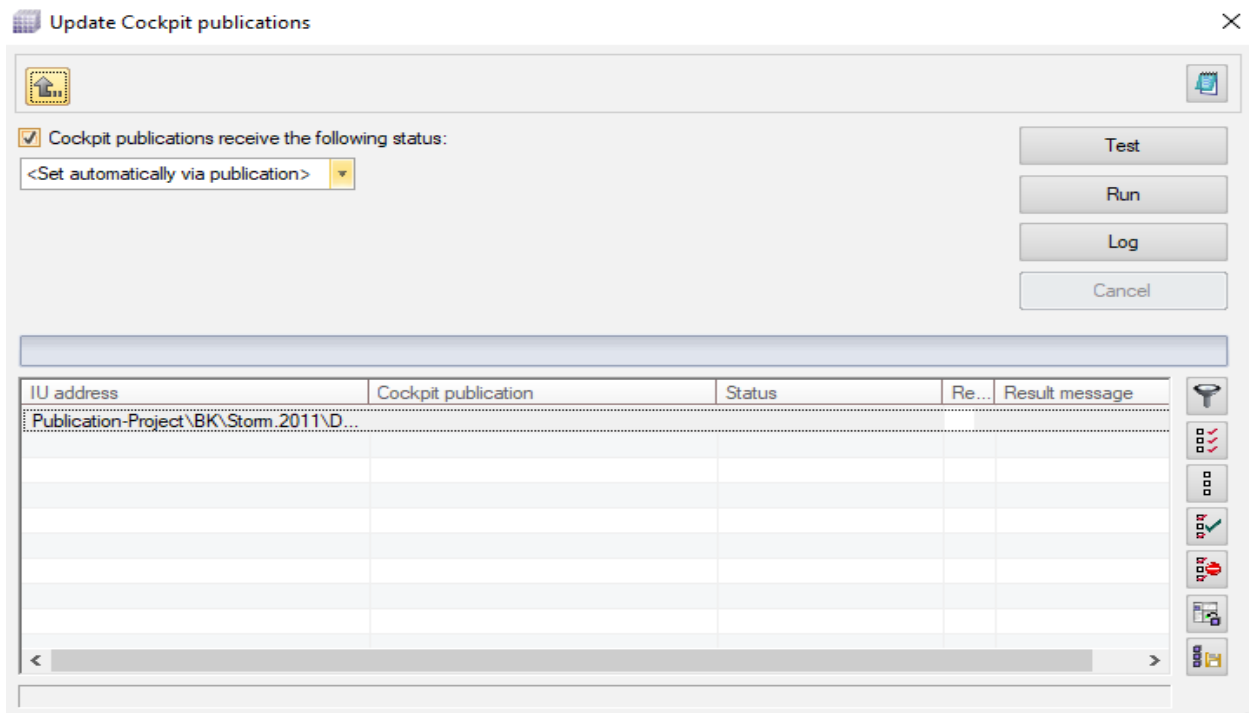
2.4.1 Display of CGM images for Windows scaling

In the case of operating system scaling (e.g., to 125%), there were problems with CGM images. Although they were displayed correctly in the ,GRIPS Viewer', after the PDF was created, the images in the PDF were depicted smaller or larger by a difference of 100% (e.g., 25%). With version 2019.04 Build 08, the presentation of the images in PDFs has been corrected.

2.5 ,Cockpit'

2.5.1 Improved output of result message during automatic creation of ,Cockpit' publications

Option: Planning Package



When **,Cockpit‘** publications are automatically created, the status for the **,Cockpit‘** publication can either be set through the publication rule or specified manually. Previously in the latter case, as part of the result message you could also see in square brackets which publication status was set.

Since this information is usually unnecessary, as of **,GRIPS‘** version 2019.04 Build 09, the interface has been simplified here, and the additional note in square brackets has been removed. The status actually set for the publication can be viewed in its own list box.



Note

The **‘Update Cockpit publication‘** function is only activated in your **,GRIPS‘** project once a corresponding publication type is defined with rules for the automatic creation/refreshing of **,Cockpit‘** publications. If this is not the case, the menu item is grayed out.

For more information, contact your **,GRIPS‘** Information Manager or **,GRIPS‘** Support.

2.5.2 Automatic creation/updating of Cockpit publications corrected

Option: Planning Package

When **,Cockpit‘** publications are automatically created/updated with the **‘Update Cockpit publication‘** dialog, the status for the **,Cockpit‘** publication can either be set through the publication rule or specified manually. In the latter case, error handling has been improved in cases where the status model is not observed.

If a status is manually assigned that is incompatible with the status model of the **,GRIPS‘** project (e.g., if a first status is not assigned when creating a Cockpit publication), as of version 2020.01 Build 07, **,GRIPS‘** issues an error message alerting the user to the problem. In such cases, the Cockpit publication is not created or updated.

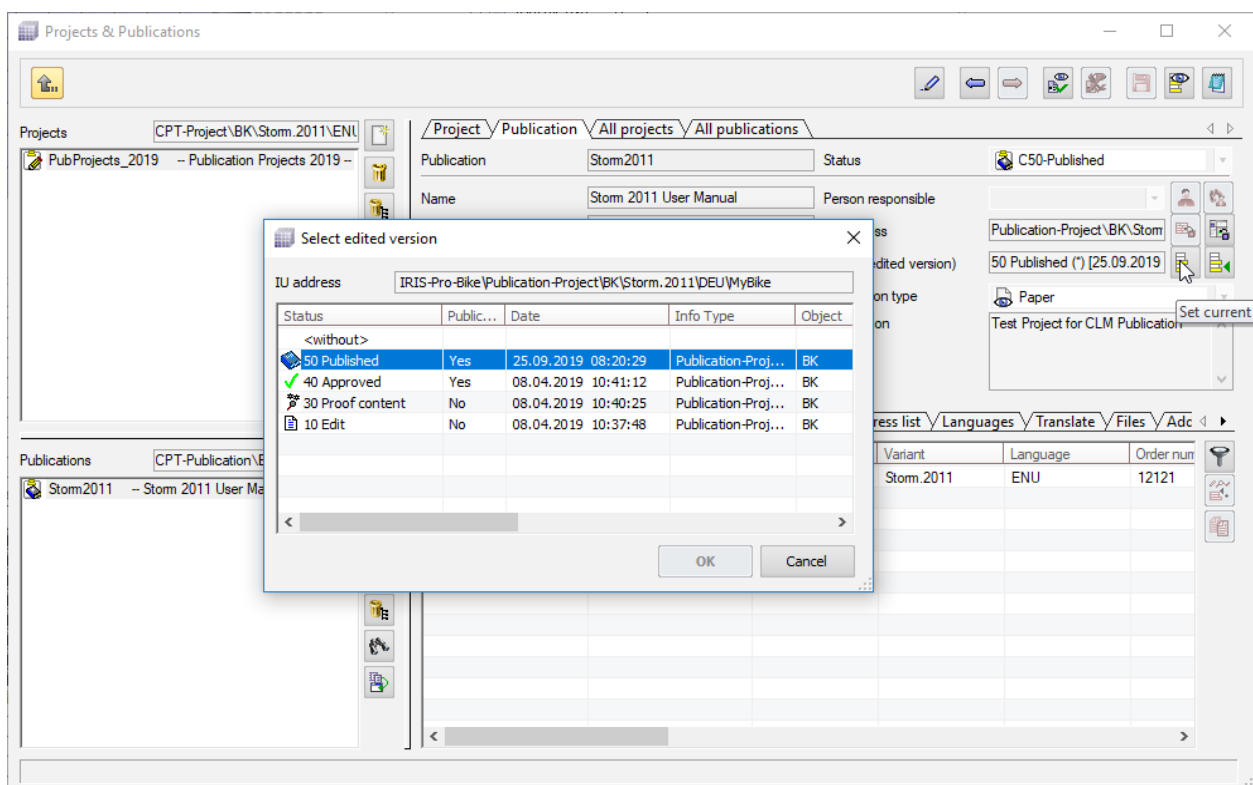
2.5.3 Simplified interfaces when ,Cockpit' languages are not found

Often publications or translations are carried out repeatedly in the same languages. Using ,Cockpit' languages, language packs can be set, which allows such processes to be more easily defined in ,Cockpit'. The ,GRIPS' user defines a ,Cockpit' language only once (containing 10 European languages, for example), so that they then only need to specify the ,Cockpit' language as a target language in the individual ,Cockpit' publications, for example, instead of the 10 languages.

If no ,Cockpit' languages are defined in the ,GRIPS' project, the corresponding control element in the 'Languages' tab of the 'Projects & Publications' dialog is hidden as of version 2020.01 Build 01 of ,GRIPS'.

2.5.4 Call up 'Set status' even in read-only mode

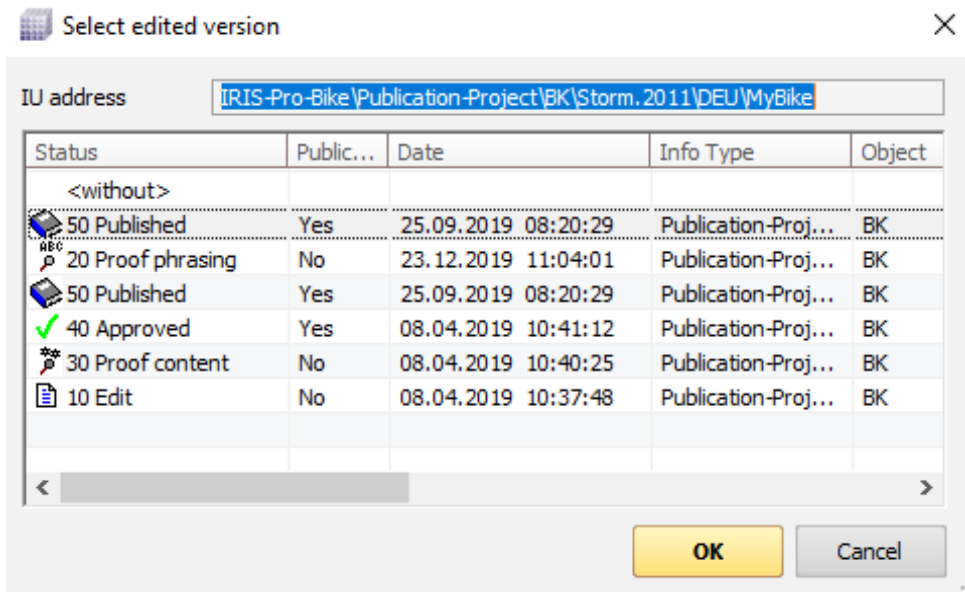
Option: Planning Package



The 'Set current edited version' button can be selected even in read-only mode in ,Cockpit', as of ,GRIPS' version 2020.01 Build 01. Thus, the ,GRIPS' user gains an easy way to obtain an overview of the maturation process of the editorial content linked in ,Cockpit'. In the 'Select edited version' dialog, however, which opens when the button is clicked on, it is no longer possible to select a different edited version. To do this, writing mode must be activated in ,Cockpit'.

2.5.5 Selection in ‘Select edited version’ dialog expanded

Option: Planning Package



In the ‘**Select edited version**’ dialog, you can select the edited version from which you wish to carry out the ,**Cockpit**‘ publication. Until now, in the ‘**Select edited version**’ dialog, only those statuses were shown that were assigned to the document itself. When users wanted to enter different edited versions to translations (e.g., an edited version of the document in the source language), this had to be additionally loaded in ,**GRIPS**‘. As of version 2020.01 Build 03, all edited versions that were assigned to the original IU are also shown in the dialog for translations.

Index

A

Acrolinx™ language check

general information (description) 1

Adjustment for creating IU lists of data refer-
ences 4

Automatic creation/updating of Cockpit publica-
tions corrected 6

C

Call up '**Set status**' even in read-only mode . . . 7

Corrections for S1000D structures 4

D

Display of CGM images for Windows scaling . . . 5

E

Error when calling up the '**Address folder**' dialog
corrected 4

Expansion state retained after copying/pasting
(Request for Feature) 5

I

Improved output of result message during
automatic creation of '**Cockpit**' publications 5

P

Presentation of marked arrows optimized in the
'**Status overview - Project: <project name>**'
dialog 3

S

Selection in '**Select edited version**' dialog
expanded 8

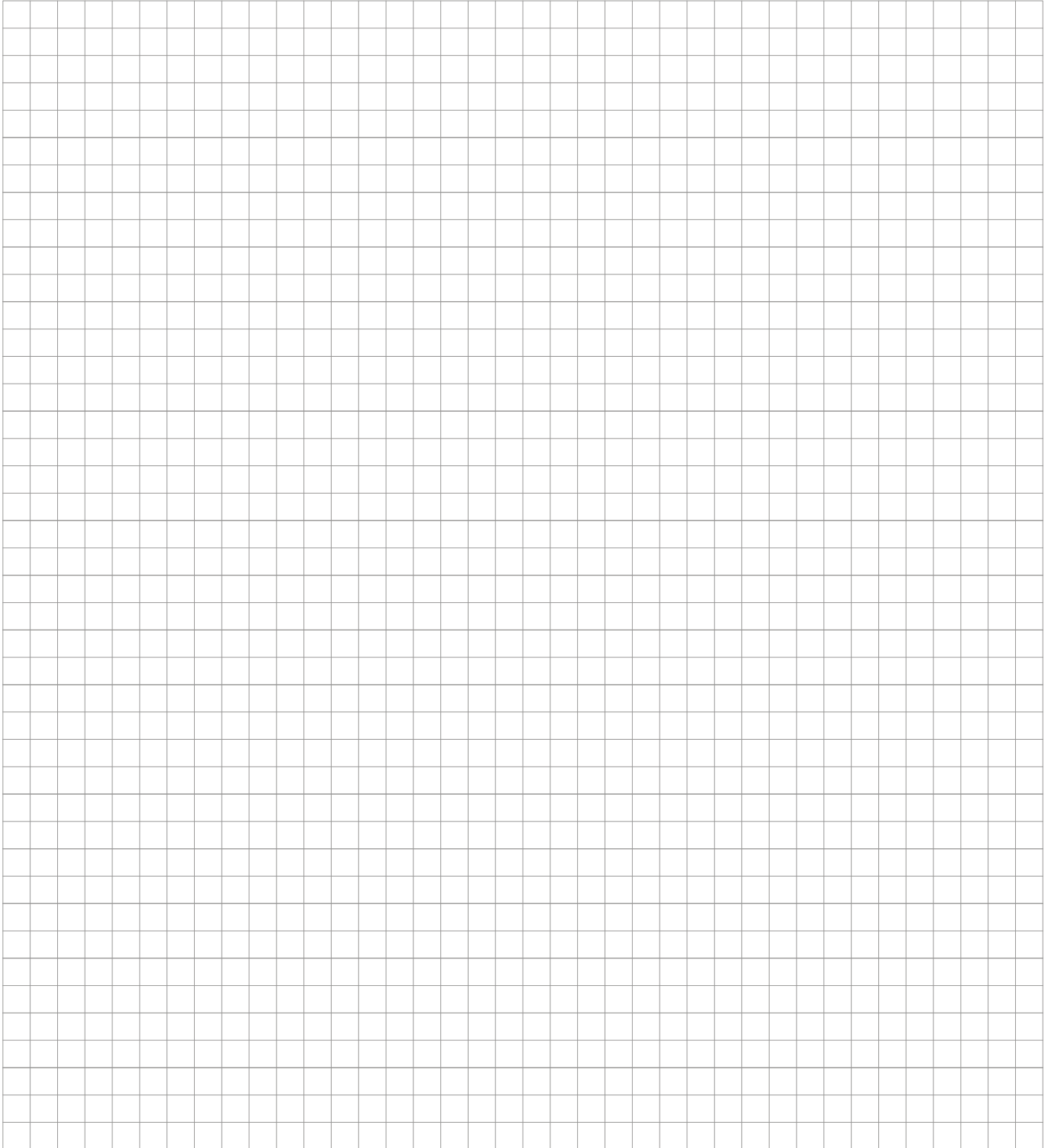
Simplified interfaces when '**Cockpit**' languages
are not found 7

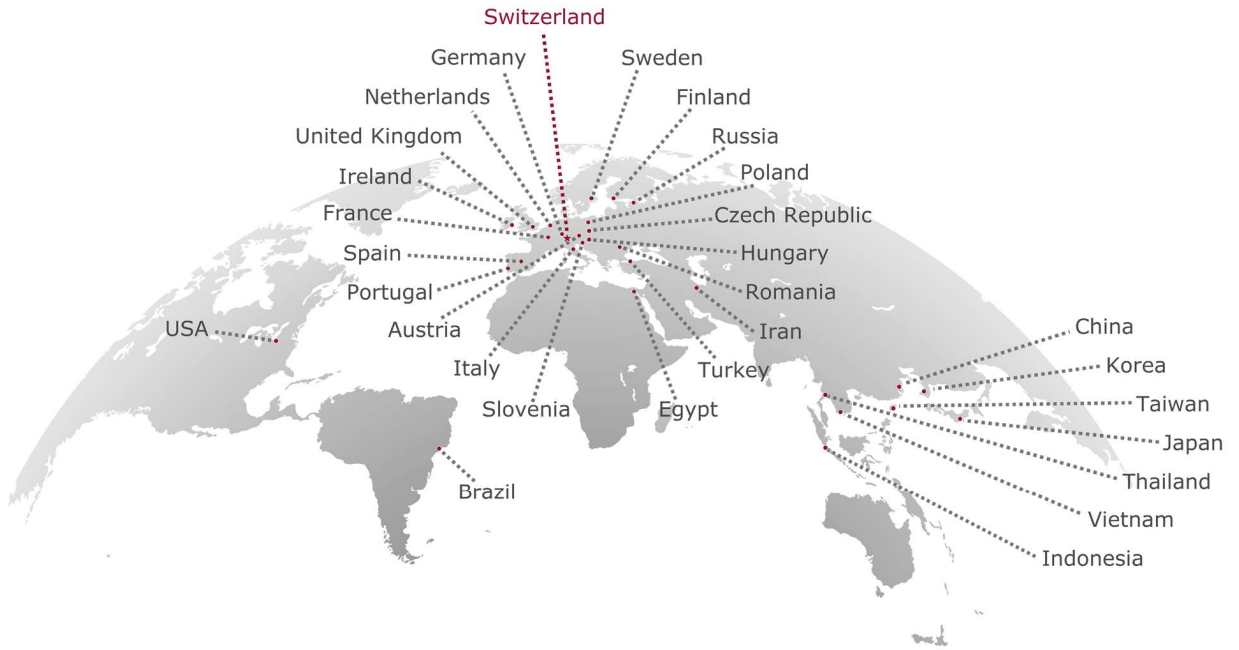
T

Track status changes in Cockpit dialogs 2

U

URL of Acrolinx server configurable 2





www.star-group.net

Your single-source partner for corporate product communication