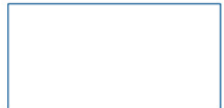
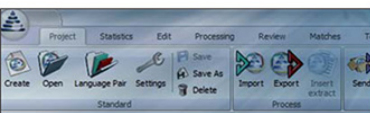


WebTransit

Overview on connection modes



Downloads Transit is being continuously further developed. You can find current Service Packs, installation instructions, user documentation and accessories on our website in the following area: ⇒ ["Downloads | Transit & TermStar NXT"](#)

Contact STAR Group Headquarters:
STAR AG · Wiesholz 35 · 8262 Ramsen · Switzerland
www.star-group.net · info@star-group.net
Telephone +41 (0) 52 742 92 00 · Fax +41 52 742 92 92

STAR Language Technology & Solutions GmbH
Umberto-Nobile-Straße 19 · 71063 Sindelfingen · Germany

STAR Group is represented globally with 50 locations in over 30 countries. You can find your local STAR subsidiary on our website under ⇒ ["Company | STAR Group worldwide"](#).

Copyright, liability and trademarks © 2014 STAR AG. All rights reserved. All wording and images contained in this document are protected by copyright and may only – in whole or in part – be reproduced, processed, passed on to third parties or published with written permission from STAR AG. If you would like to use the content of this document, please contact info@star-group.net.

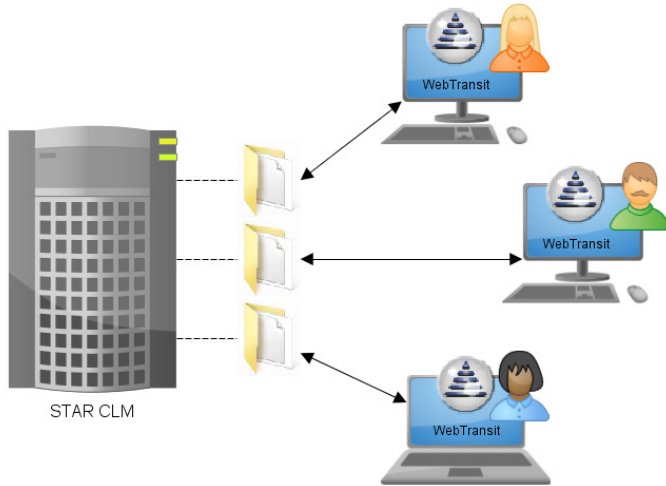
The content of this document has been carefully checked. STAR AG cannot be held liable for any consequences arising from the use of this documentation.

The trademarks used within this document are the property of their respective rights holders.

Connection modes in WebTransit

Single-user mode With the single-user mode only one WebTransit user receives jobs from a specific download folder and will be responsible for them.

The mode requires the specified download folder to be used by this user only.

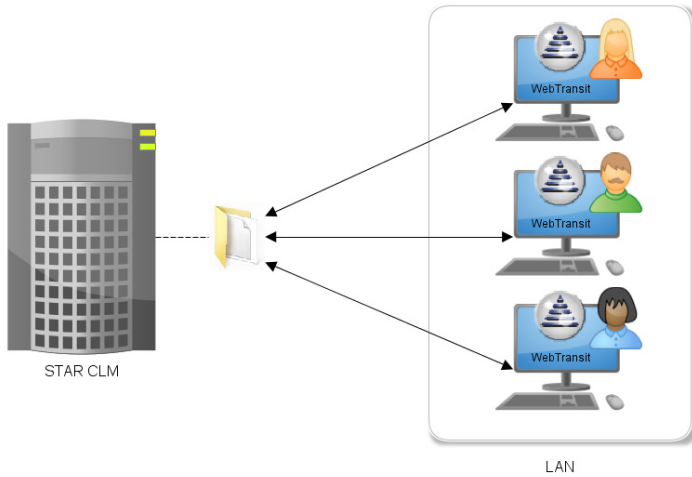


The downloaded jobs and unpacked Transit projects are saved locally.

Multi-user mode Use multi-user mode if:

- ▲ multiple users are to receive jobs from the same download folder,
- ▲ these users work together on a local network and
- ▲ only the user who has downloaded the job should work on it and deliver it.

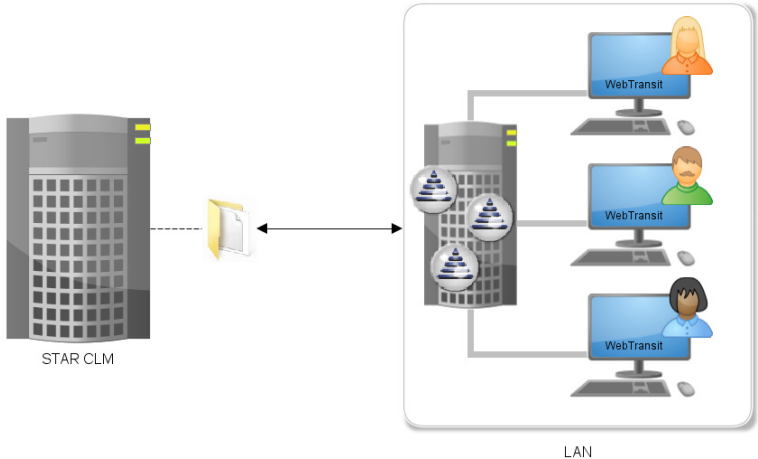
A shared network folder for access synchronisation prevents multiple users from downloading the same job simultaneously.



The downloaded jobs and unpacked Transit projects are saved locally.

Agency mode Use agency mode if:

- ▲ multiple users are to receive jobs from the same download folder,
- ▲ these users work together on a local network and
- ▲ all users should be able to work on a downloaded job and deliver it.



Prerequisite:

For using a connection in agency mode,

- ▲ Transit NXT has to used as a Host/client installation or Terminal Server installation, or
- ▲ at least, the Transit folders `projects`, `config/global`, `config/customers`, and `config/sys` must be located for all connection users in a shared directory (so called `starte.ini` installation)

On the network, the downloaded jobs and unpacked Transit projects are available to all Transit users.

User documentation For all details on the three connection modes, please refer to the WebTransit User Guide that is available for download on our website www.star-group.net under **Downloads | Transit & TermStar NXT | User Documentation**.