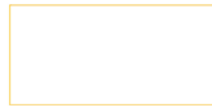
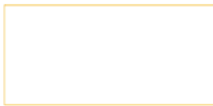
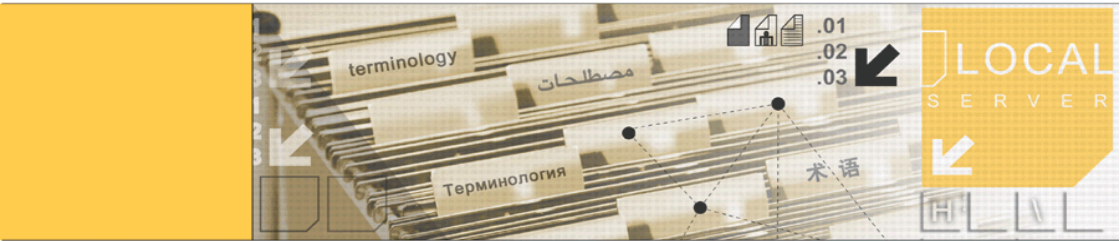




TermStar Gate for FrameMaker

Installation & Usage



2018-04

Valid from Version 2018-04.

2018-04 TermStar Gate is being continuously further developed. You can find current user documentation and installation files on our website in the following area:
⇒ ["Downloads | Transit & TermStar NXT"](#)

Contact STAR Group Headquarters:
STAR AG · Wiesholz 35 · 8262 Ramsen · Switzerland
www.star-group.net · info@star-group.net
Tel. +41 52 742 92 00 · Fax +41 52 742 92 92

STAR Language Technology & Solutions GmbH
Umberto-Nobile-Straße 19 · 71063 Sindelfingen · Germany

STAR Group is represented globally in over 30 countries. You can find your local STAR subsidiary on our website under ⇒ ["Company | STAR Group worldwide"](#).

Copyright, liability and trademarks © STAR Group. All rights reserved. All wording and images contained in this document are protected by copyright and may only – in whole or in part – be reproduced, processed, passed on to third parties or published with written permission from STAR AG. If you would like to use the content of this document, please contact info@star-group.net.

The content of this document has been carefully checked. STAR AG cannot be held liable for any consequences arising from the use of this documentation.

The trademarks used within this document are the property of their respective rights holders.

Contents

1 Overview

What is TermStar Gate?	4
What is TermStar?	4
About this document	4

2 Installing TermStar Gate for FrameMaker

What you need here	5
Installing the software	5
What you can do now	7

3 Using TermStar Gate in FrameMaker

Overview	8
Dictionaries, entry rights, source and target languages	8
Searching for a translation in the dictionary	9
Adding terminology to the dictionary	10
Displaying the dictionary in TermStar	11
Exiting TermStar	11
Changing the dialog language of TermStar Gate	12

1 Overview

What is TermStar Gate? TermStar Gate is a plug-in for FrameMaker, which enables you to search for translations in FrameMaker or enter terminology. To do so, FrameMaker accesses TermStar directly.

What is TermStar? TermStar is a terminology management system that connects all process participants and provides optimal support for all types of users: from experienced linguistic experts to the more casual user who simply needs to look up individual words sporadically.

With TermStar, you can record all your terminology and manage it in databases. You can compile monolingual, bilingual or multilingual dictionaries. You can use it for everything from simple word pairs to detailed entries containing grammatical information, detailed definitions, illustrations and cross-references.

TermStar is an integral part of the translation memory system Transit, but is also available as a stand-alone solution for work that is purely terminological in nature.

You can find more details about working with TermStar in ⇒ [TermStar User Guide](#) on our website in the ⇒ [Downloads | Transit & TermStar NXT | User documentation](#) area.

About this document This document describes how to install and use TermStar Gate:

- ▲ Installing TermStar Gate for FrameMaker (⇒ [page 5](#))
- ▲ Using TermStar Gate in FrameMaker (⇒ [page 8](#))

2 Installing TermStar Gate for FrameMaker

What you need here In order to install TermStar Gate for FrameMaker, you need:

- ▲ Adobe FrameMaker
- ▲ Transit licence number
For this license number, the optional filter for FrameMaker must be enabled.
- ▲ Installation program `tsgate_framemaker.exe`
You can find the installation program for TermStar Gate für FrameMaker on our website in the ⇒ [Downloads | Transit & TermStar NXT | Accessories](#) area.

Installing the software An installation wizard will guide you step-by-step through the installation:

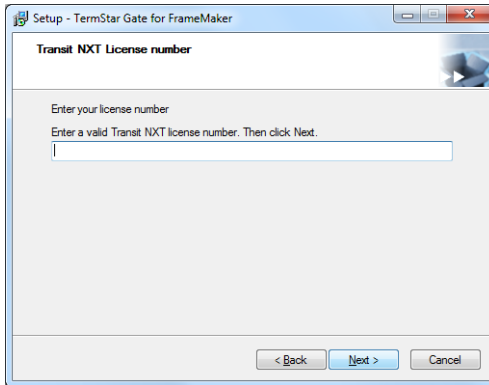
- 1 Close FrameMaker if it is running.
- 2 Run the `tsgate_framemaker.exe` file. To do so, select **Run as administrator** from the file context menu.

The installation wizard displays the following window:



- 3 Click **Next**.

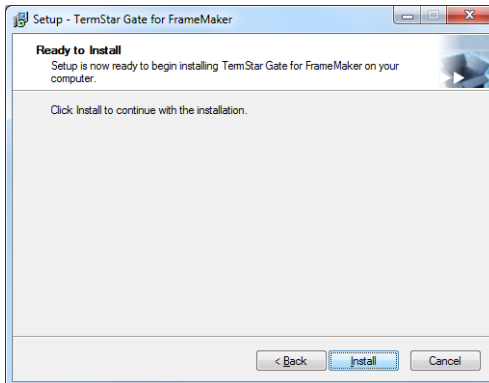
The installation wizard displays the following window:



- 4 Enter the Transit licence number.

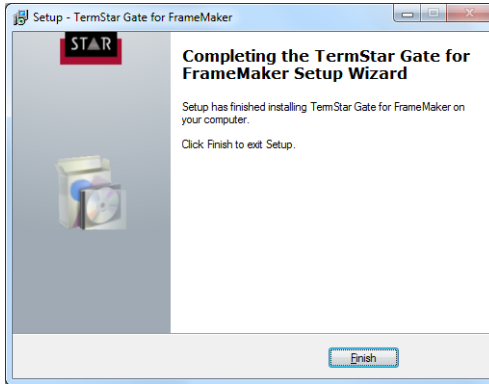
Click **Next** to confirm your entry.

The installation wizard displays the following window:



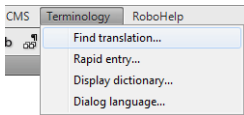
- 5 Click **Install**.

To complete the installation, the installation wizard displays the following window:



6 Click **Finish**.

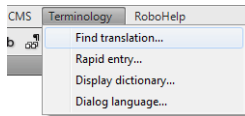
What you can do now Once TermStar Gate has been installed, FrameMaker displays the additional **Terminology** menu:



With this, you can search for translations in a dictionary, accept terminology in a dictionary, display a dictionary in TermStar and change the dialog language of TermStar Gate (⇒ [“Using TermStar Gate in FrameMaker”](#), page 8).

3 Using TermStar Gate in FrameMaker

Overview Once TermStar Gate has been installed, FrameMaker displays the additional **Terminology** menu:



This provides you with the following options:

- ▲ Searching for a translation in the dictionary (⇒ [page 9](#))
- ▲ Adding terminology to the dictionary (⇒ [page 10](#))
- ▲ Displaying the dictionary in TermStar (⇒ [page 11](#))
- ▲ Changing the dialog language of TermStar Gate (⇒ [page 12](#))

**Dictionaries,
entry rights,
source and target
languages**

The following table provides an overview of the dictionaries, entry rights and target languages which TermStar uses for access from FrameMaker.

TermStar	
Dictionaries used	TermStar opens the most recently accessed project and uses its project dictionaries.
Rights for terminology entry	It is possible to assign passwords to TermStar dictionaries. You can then only edit them after entering the corresponding password.

Dictionaries, entry rights, source and target languages

TermStar	
Source and target languages	TermStar differentiates between terminology search and term entry:
	<p>▲ Search</p> <p>When searching, TermStar uses the source and target languages from the <i>Project settings</i> (⇒ TermStar User Guide). These apply even if you have temporarily changed the source and target languages that are currently displayed.</p> <p>▲ Entry</p> <p>When entering terms, TermStar uses the source and target languages which are currently displayed under the View ribbon. If you have temporarily changed the source and target languages displayed, TermStar uses this modified choice of languages (⇒ TermStar User Guide). This applies even if other languages are defined in project settings.</p>

Dictionaries, entry rights, source and target languages (Forts.)

Searching for a translation in the dictionary

You can search for translations in the dictionary from FrameMaker. If there is a translation in the dictionary, you can insert it into your text.

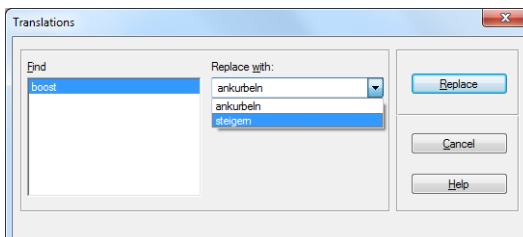
To do so, TermStar searches the project dictionaries for the project that is currently open, and uses the source and target languages from the project settings (⇒ [“Dictionaries, entry rights, source and target languages”](#), page 8).

- 1 In FrameMaker, highlight the term for which you want to find a translation.

Transit-will-boost your productivity. ¶

- 2 Select **Terminology | Find translation**.

TermStar searches in the source language of the dictionaries for the highlighted word and displays the translation in the following window:



- 3 From the list, select **Replace with** a translation and confirm your selection by clicking on **Replace**.

FrameMaker replaces the highlighted word with its translation.

If TermStar cannot find a translation, FrameMaker displays an appropriate message.

Adding terminology to the dictionary You can enter terminology from FrameMaker. You can use the rapid entry function for this. You can find more details about the rapid entry function in ⇒ [TermStar User Guide](#).

When entering terms, TermStar uses the source and target languages which are currently displayed under the **View** ribbon (⇒ “[Dictionaries, entry rights, source and target languages](#)”, page 8).

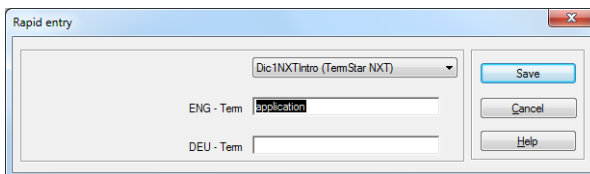
For password-protected dictionaries, you can only add terminology if you enter the password.

- 1 In FrameMaker, highlight the term that you want to add to the dictionary.

This application is especially useful if you w

- 2 Select **Terminology | Rapid entry**.

TermStar displays the following window:

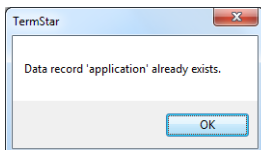


- 3 Select the dictionary into which the terminology is to be entered.
- 4 Enter the data for the new terminology:
 - If necessary, you can correct the source language term.
 - Enter the target-language term.
 - The **Rapid entry** window may display other fields that you have to fill in. Enter the required information in these fields.

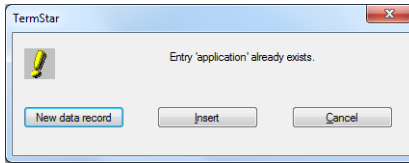
Confirm your entry with **OK**.

TermStar checks whether the dictionary already contains the terminology that you are adding.

- If *both* terms (source and target language) already exist, TermStar displays the following message:



- Confirm the message by clicking **OK**. TermStar *does not* add a data record.
- If *one* of the terms already exists, TermStar displays the following window:



You can decide whether the new terminology is a new semantic unit or a new translation of an existing semantic unit:

To add a new semantic unit, click **New data record**.

To add a new translation of an existing semantic unit (i.e. a new entry), click **Insert**.

To return to the **Rapid entry** window, click **Cancel**. You can then correct the terms, if necessary.

TermStar function adds the new terminology to the dictionary.


You can add more new terminology in the **Rapid entry** window or click **Cancel** to close it.

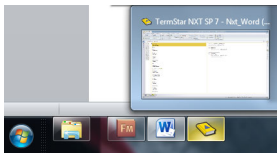
Displaying the dictionary in TermStar

You can display the dictionary in TermStar to modify settings or perform a more complex search. To do so, select **Terminology | Display dictionary**.


Exiting TermStar

If you are using TermStar from FrameMaker, it is launched automatically in the background. TermStar *does not* close automatically if you no longer require it or if you quit FrameMaker. It is therefore necessary to exit TermStar manually.

- 1 Move TermStar into the foreground. To do this, click on the  icon (TermStar) in the Windows taskbar:



Windows displays TermStar in the foreground.

- 2 In TermStar, click  (TermStar button) and select **Exit TermStar**. TermStar closes.

Changing the dialog language of TermStar Gate

You can specify the dialog language of TermStar Gate. This determines the languages in which its messages and labels are displayed.

This means they have *no* bearing on the dialog language of TermStar itself. You can find information on setting the dialog language of TermStar in ⇒ [TermStar User Guide](#).

- 1 Select **Terminology | Dialog language**.

FrameMaker displays the following window:



- 2 Select the desired language and confirm your choice with **OK**.
TermStar Gate displays messages in the chosen language.

STAR

Head Office of the STAR Group

STAR AG
Wiesholz 35
8262 Ramsen
Switzerland

Phone: +41 52 742 92 00

Fax: +41 52 742 92 92

E-mail: info@star-group.net

www.star-group.net

