



FormatChecker

The key to better formatting quality

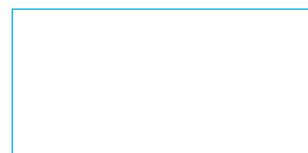




Quality under the microscope

In the communication age, product information is used by a variety of target groups according to the specific demands of their particular situations. Product documentation created in the popular word processing programs has to be appropriately adapted for those individual applications. The information has to be available on a multiplicity of media such as CD-ROM or the Internet. And product information has to be translated and localised for international markets.

All of those adaptation processes demand that the information in the original documents is of a high quality. Correct formatting that follows the defined rules is a fundamental prerequisite for flexibility in terms of future re-use of data in different formats and on other media (CD-ROM, web), and for efficient translation using translation memory systems. The golden rule is that the higher the quality of the original data, the less work and expense is involved in subsequent use. Reason enough to take a closer look at the formatting quality of documents.



FormatChecker is the intelligent and easy-to-use tool for checking the formatting of your documents while working in *Microsoft® Word®* or *Adobe® FrameMaker®*. FormatChecker helps you to create uniform documents in all areas of word processing and to permanently reduce the amount of editing work on succeeding documents.

You use FormatChecker to check your original *Word®* or *FrameMaker®* documents so that formatting errors are not repeated in subsequent documents. In that way, you can prevent error multiplication in word processing and, even before starting work on the original document, you can more accurately estimate the amount of DTP work that will subsequently be necessary, predict follow-on costs and reduce them by making corrections at an early stage.

How does FormatChecker work?

Once FormatChecker is installed, it can be accessed directly from a toolbar in *Word®* or a dedicated menu in *Adobe® FrameMaker®*. So you don't have to get used to a new program interface and FormatChecker is always available.

FormatChecker searches the open *Word®* or *FrameMaker®* document for inefficient formatting and non-typographical characters that can often cause practical problems when creating text and layout. That includes things such as manually formatted paragraphs without defined styles or the use of spaces or tabs to align text.

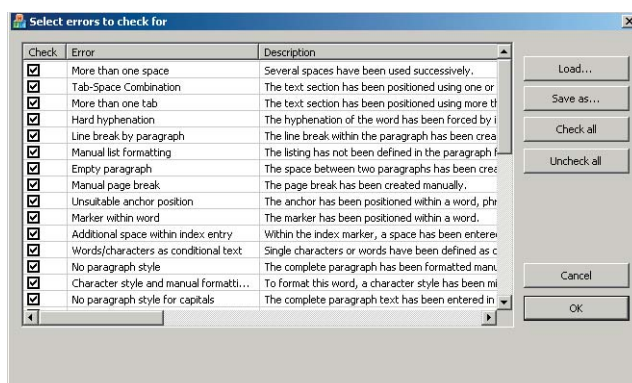
The error is highlighted and FormatChecker opens a message window showing a description of the error. If you wish, you can also view more explanations and suggested improvements, as well as a summary detailing the types of error found and a quality rating of the document formatting.

Always versatile

FormatChecker allows you to make important settings – you decide which types of error FormatChecker should search your *Word®* or *FrameMaker®* document for. In other words, you determine the criteria against which your documents are checked. And once you have specified those settings, you can save them.

You can also specify whether FormatChecker should highlight each error as it is found and display a message box with an explanation, or automatically search the entire document for formatting errors.

If multiple files or folders need to be checked, you can select the documents all at once and have FormatChecker examine them entirely automatically. In that way you can quickly obtain an assessment of the formatting quality of a large number of documents and more accurately estimate the amount of correction work and subsequent word processing required (including translation, for example).

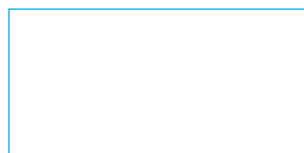
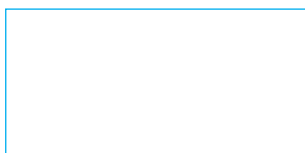


You choose the types of error that you want FormatChecker to search for.

Your benefits

- ▲ Greater compatibility
- ▲ Greater re-usability of documents
- ▲ Standardisation and optimisation of formatting
- ▲ Optimisation of DTP and word processing
- ▲ Time and money savings
- ▲ Permanent strategy for improved formatting quality

STAR FormatChecker is available for *Microsoft® Word® 2000* for *Windows®* and *Adobe® FrameMaker® 5.5* or later.





You can reach us anywhere in the world

We look forward to hearing from you.
Visit our website or simply call us.



STAR Group Headquarters

STAR AG
Wiesholz 35
8262 Ramsen
Switzerland

Tel.: +41 52 742 92 00
Fax: +41 52 742 92 92
E-mail: info@star-group.net

www.star-group.net